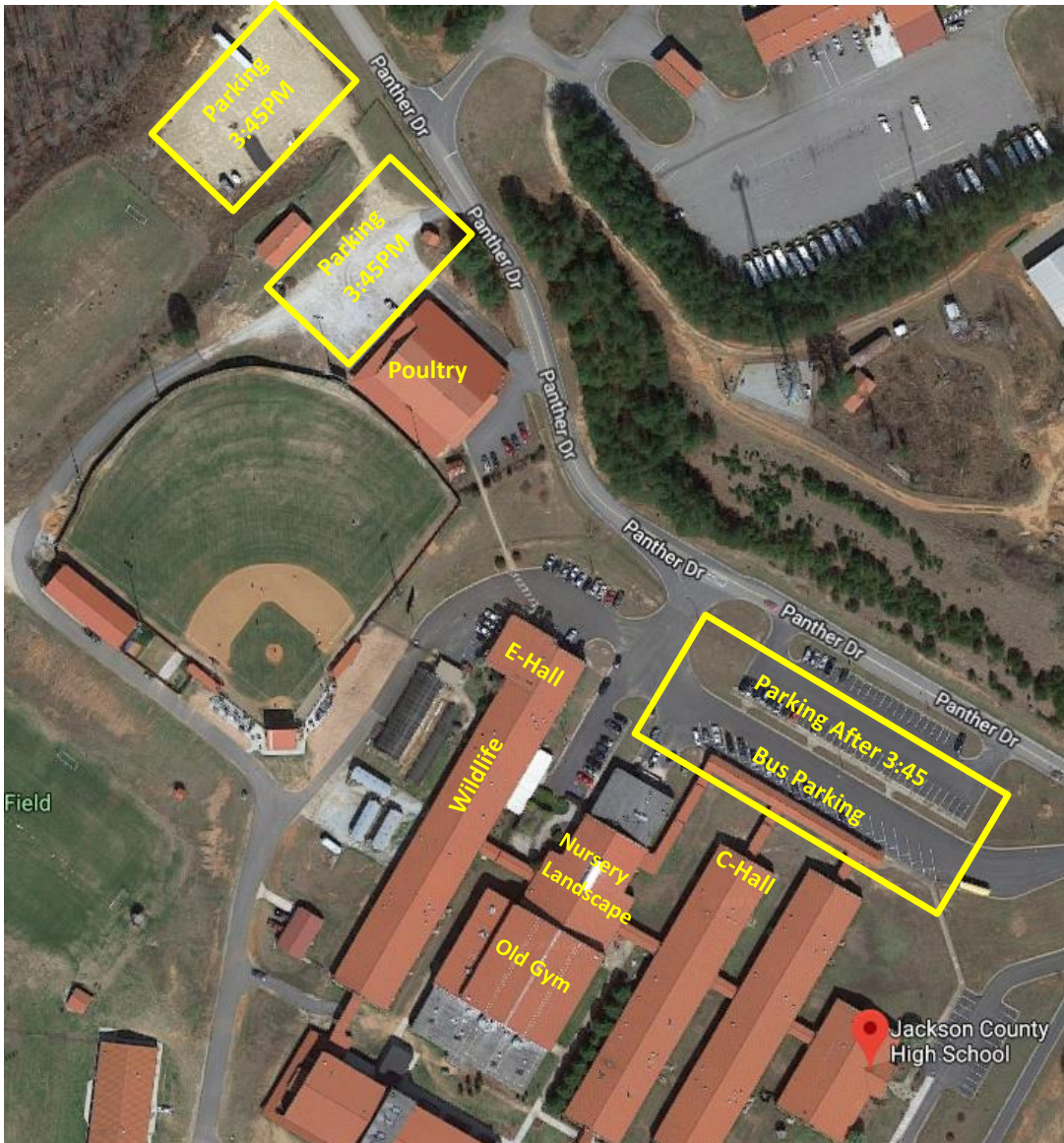


Area II Poultry, Wildlife, and Nursery Landscape CDE's



Hosted at Jackson County Comprehensive High School

PLEASE DO NOT ARRIVE BEFORE 3:45PM.

1668 Winder Highway, Jefferson, GA 30549
*Refreshments by Jackson County FFA and Jackson County Farm Bureau. Advisor Room on E-Hall.

Parking: Please park in the two gravel lots behind the barn **first** or if you have a poultry team, then move to the teacher parking lot. Be aware of mud behind the barn. Busses may also park in the slanted spots in front of the teacher lot if needed.

Please be aware it may be raining, so plan accordingly.

Locations

Poultry: CDE and Registration is in the barn. See map and look for the building marked "Poultry" and follow the arrow for entry point. Registration and holding will be in the show ring area.

Wildlife and Nursery Landscape: CDE registration will be in the Old Gym with Nursery Landscape. Please enter through C-Hall and follow the directions. Students will be held in the gym.

Snacks: Barn Area and Gym Area. PLEASE have students use trashcans

Advisor Room: E-Hall